



|·A | Architects

**We Speak Creativity**

# Foreword

“Our philosophy merges human-centered design with environmental intelligence. Every project is approached through a holistic strategy—balancing innovation, cost control, constructibility, and energy performance to deliver architecture that is both iconic and responsible.

At I.A. Architects, we do not simply design buildings—we create long-term value through intelligent, technology-driven architecture.”

**Iyhab Imad**

Founder & Design Director

# Table Of Contents

## Overview

About Us	01
Our Approach	03
	04
	05
	07
What We Do	08
Leadership	10
Our Partners	11

## I.A architects projects

### Industrial Building

Greenfield Manufacturing Plant	13
Cheetah BHN	15
Bags Manufacturing Plant	19
Indomie Factory	21

Asaba Plastic Factory	23
Noodle Project- Abia	25
Crates Shed	27

# About Us

## Brief of History

**I.A. Architects** - Inspiring Allure Architectural Prospective Drawings Services LLC.

Established in 2011 and expanded internationally in 2017, IA Architects operates within IA Engineering Group as a multidisciplinary architecture and urban design studio delivering high-value developments across the UAE and wider GCC.

Structured within an integrated architectural and engineering framework, the studio combines design intelligence with structural coordination and digital precision – ensuring projects are both architecturally refined and technically buildable.

Our work spans mixed-use developments, educational campuses, cultural destinations, commercial headquarters, and large-scale industrial facilities.

**2M**

Designs

**1,5Ha**

Masterplanning

**1,5M**

Educational  
planning

**100M**

Clear-Span  
Structural Systems

## Mission

To deliver refined, high-performance architecture that enhances asset value and strengthens market positioning across the UAE and GCC.

Through integrated design and disciplined technical coordination, we produce developments that are buildable, efficient, and commercially resilient.

## Core Values

- Design with Purpose: Every decision balances aesthetics, functionality, and longevity.
- Integrated Precision: Architecture and engineering operate within one coordinated framework.
- Intelligent Innovation: Digital tools are applied strategically to optimize performance and efficiency.

## Vision

To become a trusted architectural partner for forward-thinking UAE developers seeking design clarity supported by technical certainty.

We aim to shape future-ready developments across the GCC through architecture that merges innovation, precision, and environmental intelligence.

- Sustainable Responsibility: Environmental intelligence is embedded into early-stage decision-making.
- Value-Driven Delivery: Creativity aligns with commercial objectives and construction realities.

# Our Approach

Every commission is treated as a development opportunity requiring alignment between design ambition and execution discipline.

- **Context-Driven Design:** Massing, orientation, and spatial organization respond directly to climate, site constraints, and urban logic.
- **Integrated Architecture & Structure:** Architecture and structural systems evolve in parallel, ensuring construct-ability from early concept stages.
- **Digital Precision:** Parametric workflows (Rhino, Grasshopper, Python) and integrated BIM coordination through Revit support data-informed design decisions and reduce inefficiencies.
- **Long-Term Performance:** Environmental strategies, energy efficiency, and operational durability are embedded at project inception.

# Computational Design & Parametric Integration

Advanced computational workflows are embedded within our methodology.

Through parametric modeling and performance - driven analysis, we refine architectural form, structural logic, and spatial efficiency with measurable precision.

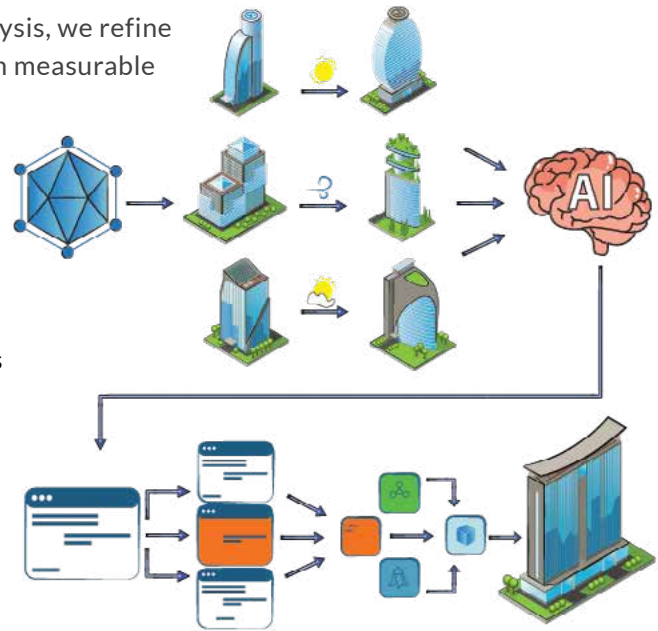
## Capabilities

- Generative Form Development
- Facade Rationalization
- Structural Grid Optimization
- Solar & Environmental Analysis
- Area & Data Optimization

## Digital Environment

- Rhino
- Grasshopper
- Python
- Autodesk Revit (BIM)
- Autodesk Navisworks
- Autodesk AutoCAD

This integrated digital ecosystem ensures architectural ambition is supported by technical accuracy and constructible outcomes.



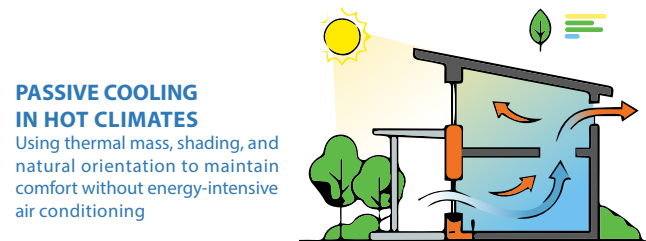
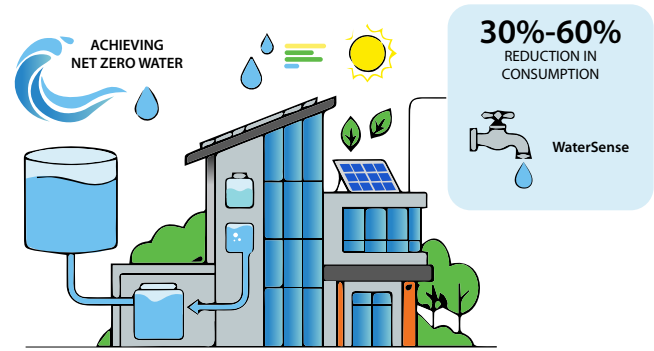
## Sustainability & Environmental Performance

Sustainability is embedded from concept through delivery.

Our projects integrate:

- Passive Climate Response
- Natural Ventilation & Daylight Optimization
- Renewable Energy Strategies
- Water Efficiency Systems
- Landscape-Integrated Cooling Solutions

Our objective is measurable environmental performance aligned with long-term asset resilience and operational efficiency.



# Integrated BIM & Technical Delivery

A unified BIM environment governs project development.

Architecture and structure are coordinated within a federated model to ensure alignment, efficiency, and reduced execution risk.

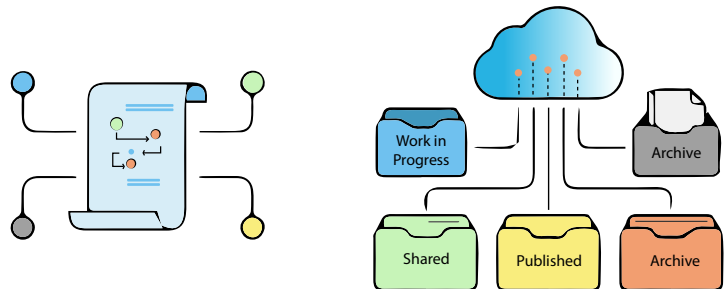
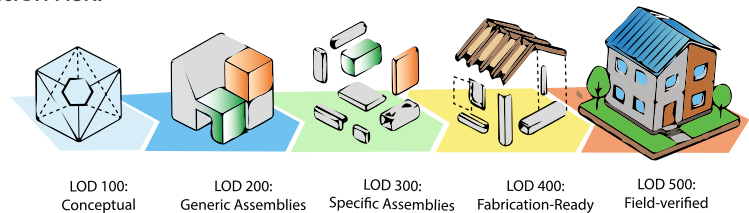
## BIM Strategy

- Federated Model Integration
- LOD - Based Development
- Clash Detection & Resolution
- Model-Based Documentation

## Project Advantages

- Reduced Coordination Conflicts
- Improved Construction Efficiency
- Enhanced Cost Predictability
- Clear Interdisciplinary Communication

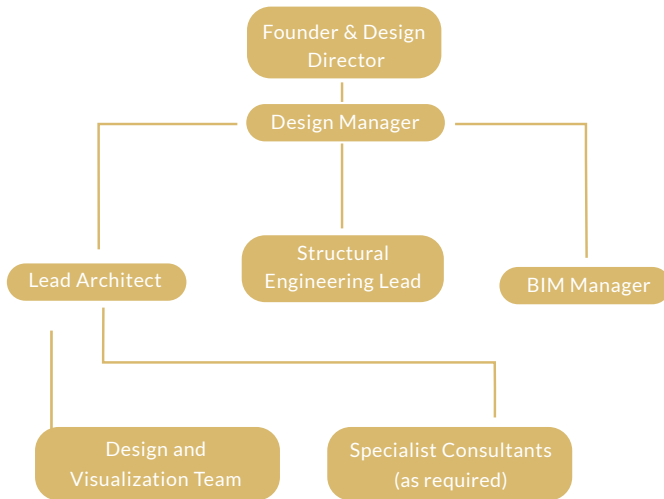
Design intent transitions seamlessly into execution.



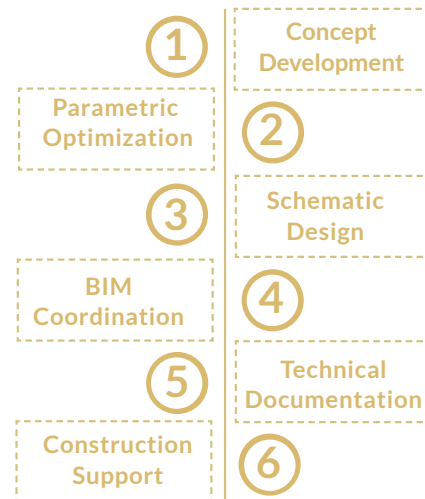
# Project Governance

Structured leadership ensures continuity from concept to construction.

## Project Structure:



## Delivery Phases:



# What We Do

## Architecture

We view architecture as the disciplined synthesis of form, function, structure, and context. Every project is shaped through an integrated design process where architects and engineers collaborate from the outset - aligning spatial quality, environmental performance, structural logic, and urban presence into one cohesive vision. The result is architecture that is expressive yet rational, sustainable yet efficient – designed to serve both its users and its long-term value.

## Structural Engineering

We deliver advanced structural solutions for complex buildings and steel systems, integrating engineering precision from concept through construction. Our team specializes in high-performance structural design, including seismic and non-linear analysis, ensuring safety, efficiency, and code compliance at every stage. Working in parallel with our architectural teams, we develop rational, build able structures that support design ambition while meeting local regulations and international standards.

## Urban Design

We shape integrated urban environments that extend beyond individual buildings. Our multidisciplinary team combines spatial strategy, landscape intelligence, economic awareness, and environmental analysis to create context-responsive master plans tailored to specific social, climatic, and development conditions. The result is cohesive urban frameworks that support long-term growth, live-ability, and commercial viability.

## Design Support

Our design support team leverages advanced digital decision-making throughout the project life cycle.

From high - quality visualizations and 3D modeling to graphics, animation, and physical models, we provide precise representational tools that clarify design intent and strengthen client and stakeholder engagement.

## Design Management

We provide structured oversight throughout design and construction to ensure clarity, control, and continuity. From programming and change management to procurement coordination, document control, payments, and risk mitigation, our management framework safeguards project progress and protects delivery outcomes at every stage.

# Leadership



**Iyhab Imad**

Founder, Managing & Design Director

With over 15 years of professional practice, Iyhab Imad leads the firm's strategic direction, design vision, and overall management. He oversees business operations, project governance, and multidisciplinary coordination, ensuring consistency in quality, performance, and delivery standards. His leadership aligns architectural innovation with technical discipline, reinforcing the firm's commitment to refined, build able, and value-driven developments.



**Hamza Harb**

Managing Partner

over 18 years of experience in contracting, finishing, and interior decoration. He brings a results-driven approach that merges strategic leadership with hands-on industry expertise, ensuring projects are executed with precision and uncompromising quality. Focused on long-term value and sustainable growth, he is committed to delivering refined outcomes that reflect discipline, reliability, and excellence at every stage.

# Our Partners





# I.A ARCHITECTS PROJECTS



# Greenfield Manufacturing Plant

Enugu, Nigeria 2021

Client  
JOTNA NIGERIA LIMITED

Site Area  
82,800 m<sup>2</sup>

Total floor area  
20,400 m<sup>2</sup>

Building Height  
12 m

Services  
Architecture  
Structural Engineering  
(Conceptual Design)

As a response to phase one of the 2021 development plan for Jotna Nigeria limited company, the new Greenfield manufacturing plant was planned to be located in Enugu on 82,800 m2 of land. containing three main blocks: Manufacturing block, Offices & Amenity Block, and Utility Block.



Industrial Building



The large variance in levels in the construction site was the main challenge, so at the early stage of the design, our architect team has concentrated on reducing the cost of excavation and backfilling and improving the vehicular circulation & street network. effectively, our design solution has succeeded in the best balance between cut and fill volume.

# Cheetah BHN

Nigeria 2022



Project Cheetah redefines logistics architecture for BHN Nigeria through the design of high-capacity, technology-driven warehousing. The project prioritizes optimized spatial zoning, integrated automated supply chain workflows, and advanced structural engineering. By streamlining distribution networks, the architecture serves as a scalable, efficient framework, positioning BHN as Nigeria's premier logistics hub.



Client  
BHN Logistics Ltd  
Site Area  
95000 m<sup>2</sup>  
Services  
Architecture  
Structural Engineering







# Bags Manufacturing Plant

Ewekoro, Nigeria 2022

Client  
Lafarge Holcim

Site area  
17,700 m<sup>2</sup>

Total floor area  
Factory area: 11,700 m<sup>2</sup>  
Exterior area: 6,000 m<sup>2</sup>

Building Height  
12 m

Services  
Architecture  
Structural Engineering

As an extension to Wapco-Lafarge Ewekoro I & II plants and on 17.600 m<sup>2</sup> land, the manufacturing plant was situated, occupying 160X80m. Using the pre - engineered steel building technology “PEB” as a structural system to solve the issue of the long span of the building width, our design solution successfully reduced the cost of the construction up to 60%, in addition to satisfying a wide range of structural and functional requirements. as well, this structural system solution has assisted to provide more flexibility in the architecture aspect, improve the natural light, and create a healthy environment for the interior spaces.



An aerial photograph of an industrial area in Nigeria. The central focus is a large, long factory building with a prominent blue roof and white walls. The name 'Indomie' is visible on the side of the building. The factory is surrounded by various other industrial structures, including smaller warehouses and buildings with different colored roofs. In the foreground, there are several yellow and green buses parked. The background shows a dense urban area with many residential buildings and streets. A semi-transparent white box is overlaid on the top left of the image, containing the text 'Indomie Factory' and 'Nigeria 2022'.

# Indomie Factory

Nigeria 2022

The project effectively tackles the complexities of large-scale manufacturing infrastructure by optimizing spatial efficiency and enhancing structural performance, focusing on the strategic zoning of high-volume, pitched-roof production facilities along with heavy-duty logistical warehousing through the integration of advanced industrial workflows.

Client

Tolaram Group

Site area

534 m<sup>2</sup>

Total floor area

752 m<sup>2</sup>

Building Height

5.6 m

Services

Renovation, Structural engineering



# Asaba Plastic Factory

Asaba City - Nigeria 2022



a high-capacity plastic manufacturing factory in Asaba City, Nigeria. The architecture optimizes large-span steel structures, efficient industrial zoning, and comprehensive logistics yards to facilitate streamlined production and heavy-vehicle distribution workflows.



Client  
Kaydee Industries

Site area  
9825 m<sup>2</sup>

Total floor area  
4921,4 m<sup>2</sup>

Building Height  
19 m

Services  
Architecture  
Structural Engineering



# Noodle Project- Abia

Nigeria 2025

**Client**  
Dufil Prima Foods Ltd

**Site Area**  
6,500m<sup>2</sup>

**Total floor area**  
5,972m<sup>2</sup>

**Structure Height**  
17m

**Services**  
Architecture  
Structural Engineering

This industrial architecture project encompasses the master planning and structural design of a high-capacity, state-of-the-art noodle production plant in Abia, Nigeria. The facility is engineered to optimize high-volume food processing workflows, seamlessly integrating raw material intake, automated mixing and sheeting lines, high-temperature frying/drying zones, and high-speed packaging bays.



# Crates Shed

Nigeria 2025



This industrial crate shed utilizes a robust, large-span steel portal frame. The open design maximizes structural durability while providing unrestricted forklift access for optimized logistics workflows.




**Client**  
Guinness Nigeria Plc

**Services**  
Architecture  
Structural Engineering

# Contact Us

 Office No. 314, Aresco Offices Building No. 3, DIP  
Dubai - United Arab Emirates.

 +971 50 998 5184

 [info@iaenggroup.com](mailto:info@iaenggroup.com)

 [www.iaenggroup.com](http://www.iaenggroup.com)



IA Engineering Group

IA Architects

IA Architects

IA Architects

